

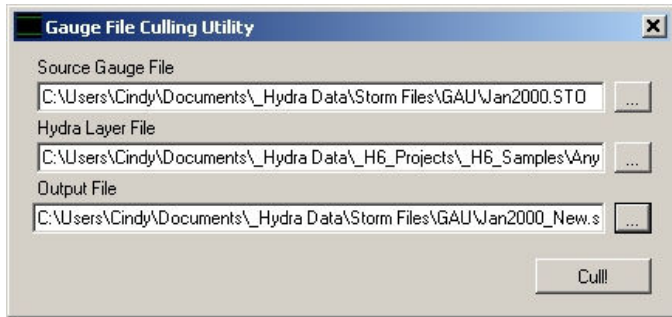
Version 7.1 Newest Features

March 2015 Update: Hydra Interface 7.1.7.7 GISMaster Update

The latest version of the Hydra® 7 interface includes many new features requested by users, bug fixes, and other improvements. This release also includes an updated GISMaster add-on module for AutoCAD.

New Utility for Radar Data

We have created a new “Gauge File Culling Utility” for clipping radar data for storm files down to what’s needed for the modeling project. This is useful if you have gauge-adjusted radar data for a much larger region than the sewer modeling project area. Extremely large Storm data sets can cause problems for the Hydra Engine.



The utility does a geographical search of the Storm data. Using the X/Y coordinates in your collection system layer, it does the same “find the nearest gauge” process that the Hydra engine does during hydraulic analysis. It creates a new Storm data set that does not include any GAU commands that would not generate any injections.

New Interface for Engine Reports

Now you can select extra output reports from the hydraulic analysis engine on a new “Engine Reports” tab in the Scenario Properties dialog box. Simply click each option to select the following:

- Spreadsheet Results Report
- Link Hydrograph Report
- Defects Hydrographs Report
- Flow Volume Report
- System Capacity Report
- Construction Cost Estimate Report

After checking the report options, when you run hydraulic analysis, look for additional files in the project scenario sub-folder.

SY_NAME in Profile Details

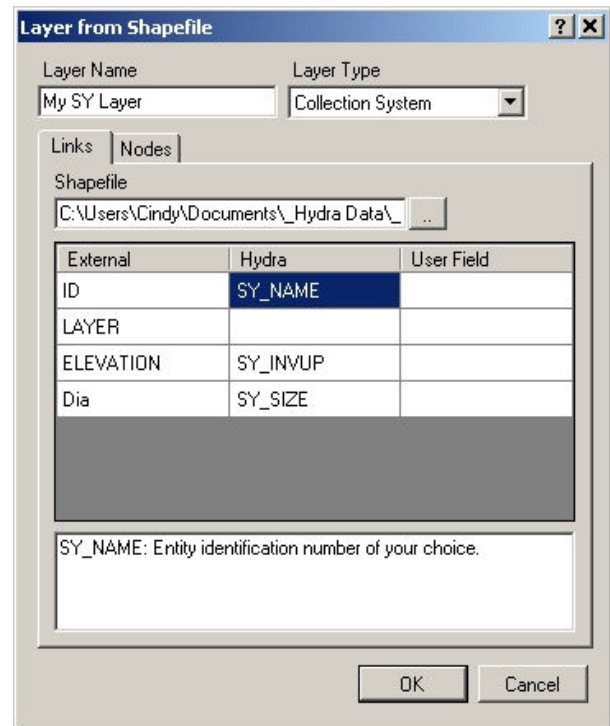
SY_NAME is now a row in the data grid in the Profile Details window, in addition to the column heading. So now when you click **Copy to Clipboard**, the SY_NAME data is included.

New Layer added to Project Menu

Now there are two ways to create a new layer. You can click the **New Layer button** to the left of the Plan Window, or you can select **New Layer** from the **Project** menu.

Shapefile Field Description Display

Now when you are importing Shapefiles from ArcGIS into Hydra 7, you can see the Hydra field descriptions in the **Layer from Shapefile** dialog box addition to the field names. This is a helpful reference if you are unfamiliar with Hydra’s fields.



Updates to GISMaster for AutoCAD

We have corrected a bug in the GISMaster versions for AutoCAD 2012, 2013, and 2014. This corrects a problem with the display of entity IDs in AutoCAD on the polygon layers.

--

Please let us know what new features you would like to see included in the next software update.

